

Interoperability: Connected Ecosystem or Modern Tower of Babel



Lisa R Esch

Chief Population Health Innovation officer
Americans Healthcare and Life Science
DXC Technology

himss

CENTRAL & SOUTHERN OHIO *Chapter*

A little about me

Work for DXC Technology which is the world's leading independent, end-to-end IT services company which was brought about by the merger of CSC and HP in 2016.

Responsibilities focus on Population health , IT innovation and digital transformation

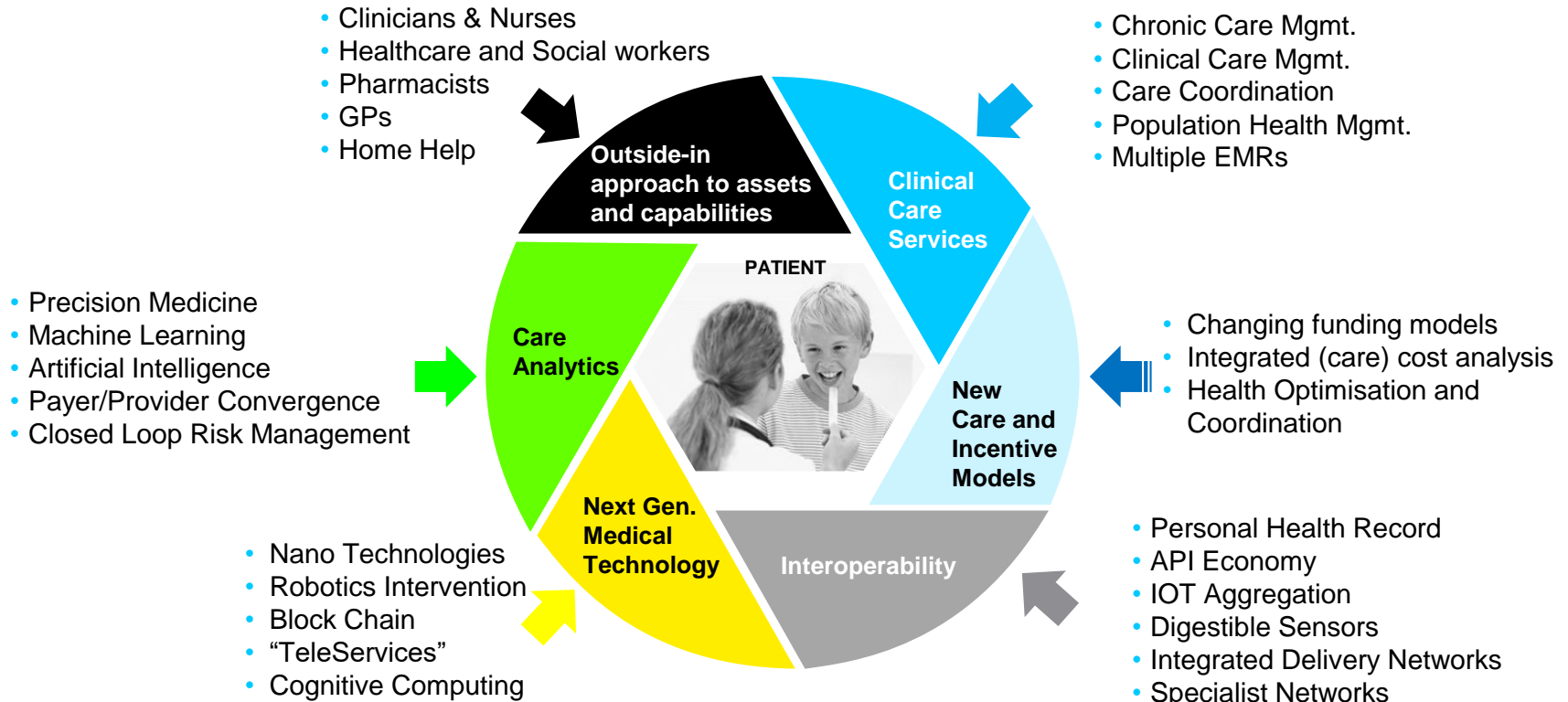
Experience as a clinician, hospital leader and consultant.

Favorite's include Big 10 football, watercolor painting, traveling, and family

lesch2@dxc.com

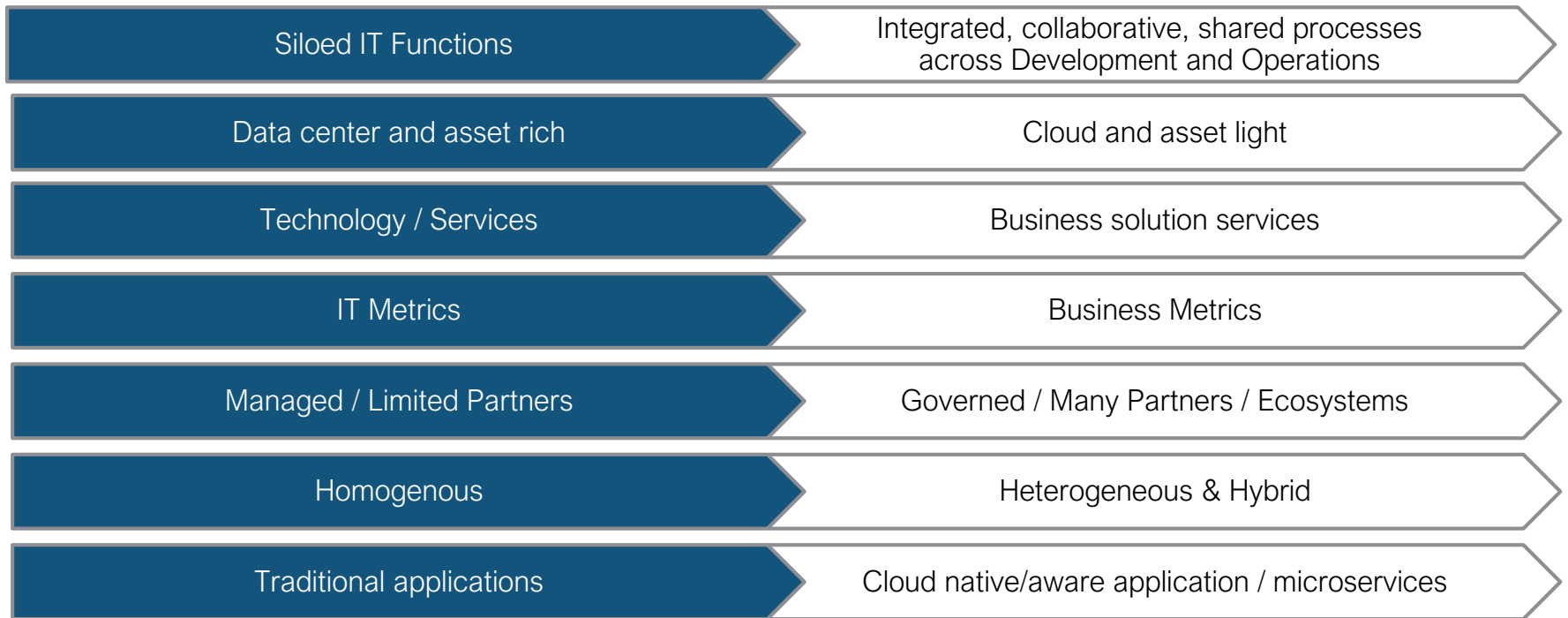
T: @lisaesch

HealthCare 3.0 ... Is an Integrated Journey



Clinical Transformation & Population Health Management Requires a New Approach

Broad Shifts in the IT Industry are Happening



Digital disruption is the next big cycle for IT services



Paradigm Shift For IT Services



Outside-in innovation



Digital platforms



Digitization of workflow at scale



Impact on all sectors



Consulting fatigue



Beyond Just IT



Product, service, business model



Enterprise transformation



Customer experience



CEO top of mind



Requiring Excellence On Multiple Dimensions



Scale & skills



Agility & cost efficiency

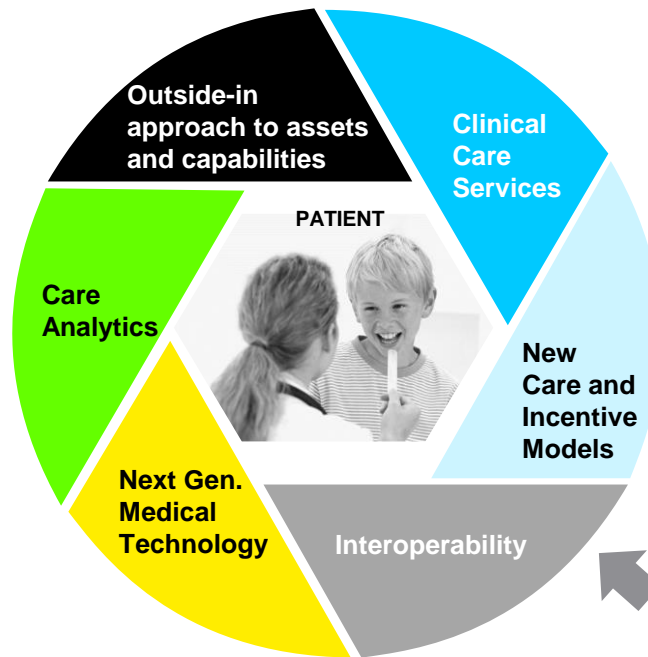


Technology access



Customer intimacy

Interoperability..... where are you today?



- Personal Health Record
- API Economy
- IOT Aggregation
- Digestible Sensors
- Integrated Delivery Networks
- Specialist Networks

Are the challenges of interoperability contributing to patient, consumer, provider and physician burnout?

A few questions to think about....

- Has digital transformation moved faster than your organization can plan, fund and execute?
- Are you stuck in an interoperability strategy that is not supporting where you need to go today?
- Can the EMR really be the center of all things?
- What can we learn from other industries?
- How are you thinking about blockchain and can there be use cases that can be applied today?
- How can we manage security around all this connectedness?
- Where does workplace and mobility fit into interoperability?
- How can we really drive and support customer engagement?

Clinical Transformation & Population Health Management Requires a New Approach

An Interoperability Success Story



New York Presbyterian: DXC Integration & Interoperability Engine, is the backbone for application integration

Business need

- Critical integration and interoperability services across the NYP Health System
- Integration between disparate clinical applications and 7 different EMR systems
- The need for EMPI and myNYP; interfaces to support lab orders, scheduling and revenue cycle
- Connectivity with Healthix (NY RHIO)
- NYP need to provide physicians with a broader range of clinical data access for better care coordination



DXC solution

- Viaduct Integration Engine allows NYP to align with Population Health Management and helped them to enable the innovation using data sets in support of the longitudinal patient record.
- DXC developed the interoperability that NYP required in order to operate more efficiently.
- Providing interfaces for 7 different EMR systems and more than 1,500 interfaces allowed NYP to streamline operations
- Integration with NYP EMPI and myNYP interfaces
- Support lab orders interfaces
- Allow patient scheduling across disparate systems and integration of revenue cycle
- Provide physicians with a broader range of clinical data access for better care coordination
- NYP has over 1,500 interfaces
- Processes more than 20M transactions daily

Client outcome

- DXC provided critical integration and interoperability services across the NYP Health System through our Viaduct Integration Engine. DXC developed the interoperability that NYP required in order to operate more efficiently.
- Providing interfaces for 7 different EMR systems and more than 1,500 interfaces allowed NYP to streamline operations.
- Remove issues with disparate systems
- Integration with NYP EMPI and myNYP; interfaces
- Support lab orders, scheduling and revenue cycle
- Connectivity with Healthix (NY RHIO) and my NYP to provide physicians with a broader range of clinical data access for better care coordination. Currently NYP has over 1,500 interfaces and processes more than 20M transactions daily.



*“We wanted to create a **Golden Record** for our **5.8 Million patients** where the majority of **UPMC staff** can effectively and efficiently interact with them and no longer **be required** to work from source systems like our **EMR.**”*

— UPMC

UPMC LIFE
CHANGING
MEDICINE

www.UMPC.com

An integrated global nonprofit health enterprise that has 60,000 employees, over 20 hospitals with more than 5,000 licensed beds, 500 clinical locations including outpatient sites and doctors' offices, a 3 million-member health insurance division

Thank You!



Lisa Esch • 1st

Helping others thrive via disruption and change as the Chief Population Health
Innovation Officer at DXC



lesch2@dxc.com
T: @lisaesch